




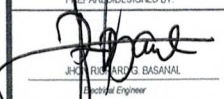

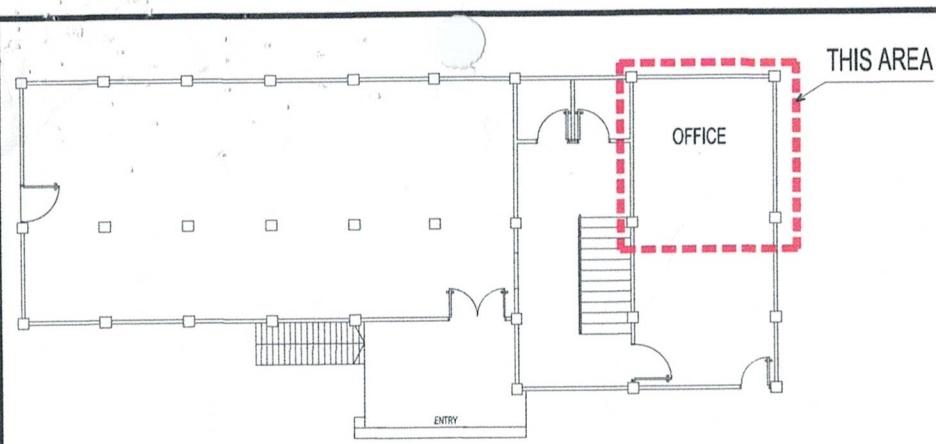


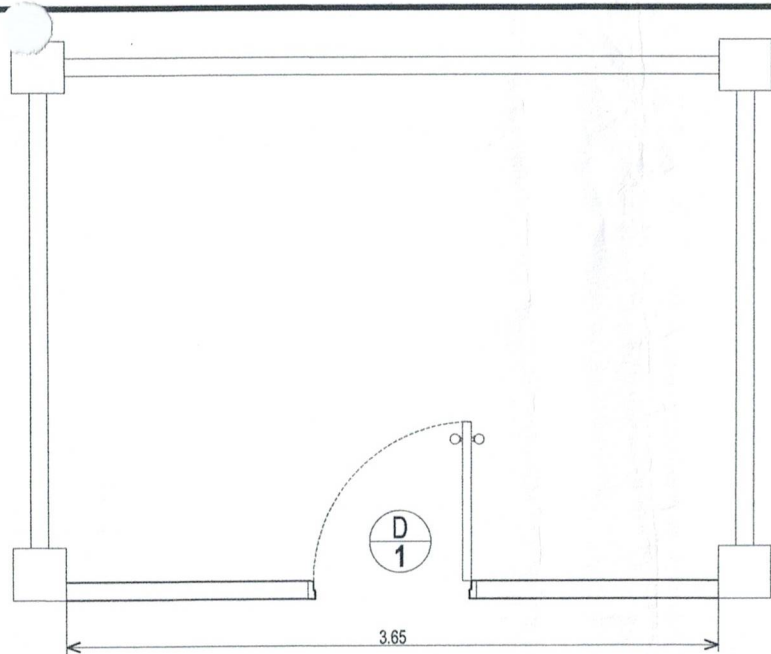
REPUBLIC OF THE PHILIPPINES
DEPARTMENT OF SOCIAL WELFARE AND DEVELOPMENT
 GEN. VICENTE ALVAREZ STREET, ZAMBOANGA CITY

PLANS
PROVISION OF GLASS PARTITION WITH
SWING DOOR AND LOCKSET
AT CIU OFFICE
 CIU, STA. BARBARA, ZAMBOANGA CITY

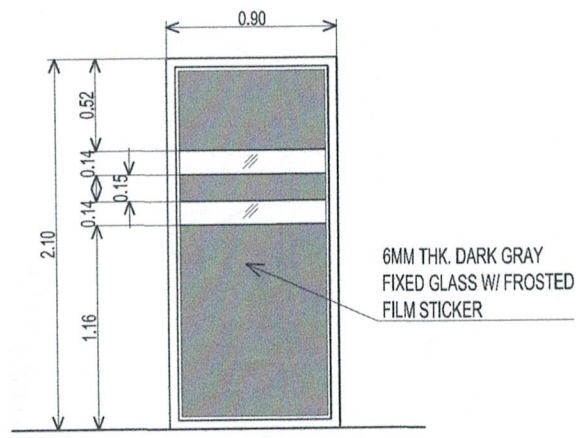
 		
<small>FIELD OFFICE IX</small> <small>ADMINISTRATIVE SERVICE / DIVISION</small> <small>FIELD OFFICE IX</small> <small>DSWD-AS-OF-009 (REV. 01) (A. 11.11)</small>		
PROJECT NAME: PROVISION OF GLASS PARTITION WITH SWING DOOR AND LOCKED SET AT CIU OFFICE		
LOCATION: CIU, STA. BARBARA, ZAMBOANGA CITY		
SHEET CONTENT: PROJECT TITLE		
<small>DESIGNED BY:</small> 		
<small>RIDUAN P. ADJUMANAN</small> <small>Project Architect</small>		
<small>PERFORMED BY:</small> 		
<small>GEN. G. FERNANDEZ</small> <small>SAO/DC-Administrative Division</small> <small>Chief</small>		
<small>CHECKED BY:</small> 		
<small>ROBERTO M. WALIS, CE</small> <small>AdV / Support Section Head</small>		
<small>PREPARED/DESIGNED BY:</small> 		
<small>JUAN RICHARD BASALAN</small> <small>Electrical Engineer</small>		
<small>DRAFTED BY:</small> 		
<small>MICA PEREZ</small> <small>AEI</small>		
<small>PROJECT/TA No:</small>		
<small>DATE SUBMITTED:</small>		
<small>DRAWING STATUS</small>		
<small>DATE</small>	<small>DESCRIPTION/REMARKS</small>	<small>BY</small>
<small>PLAN CATEGORY</small>	<small>SHEET NUMBER</small>	<small>PAPER SIZE</small>
AR-01	01/02	A4



1 KEY PLAN
SCALE 1:150 METERS

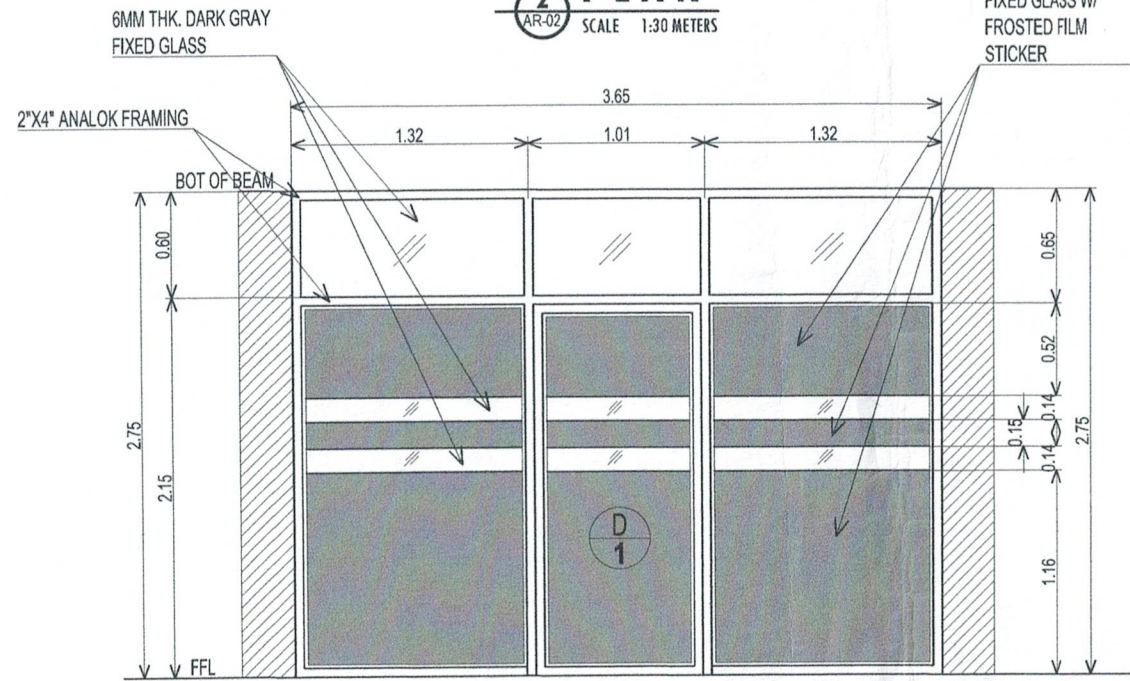


2 PLAN
SCALE 1:30 METERS



SIZE: 0.90m x 2.10m
TYPE: SWING GLASS DOOR WITH FROSTED FILM IN ANALOK FRAMING W/ COMPLETE LOCKSET
QUANTITY: 1 UNITS
LOCATION: OFFICE

4 DOOR SCHEDULE
SCALE 1:30 METERS



3 ELEVATION
SCALE 1:30 METERS

DSWD REGION IX
ADMINISTRATIVE SERVICE DIVISION
FIELD OFFICE IX
DSWD-AS-OF-008 (REV 03) 12.04.18

PROJECT NAME:
PROVISION OF GLASS PARTITION WITH SWING DOOR AND LOCKED SET AT CIU OFFICE

LOCATION:
CIU, STA. BARBARA, ZAMBOANGA CITY

SHEET CONTENT:
AS SHOWN

APPROVED BY:
[Signature]
RICHARD M. BASANAL
Professional Engineer

CONFIRMED BY:
[Signature]
REYNALDO G. FOJAS
SAO/IC-Administrative Division Chief

CHECKED BY:
[Signature]
PROFESSOR F. FALSIS
AC/IC-Property Section Head

DESIGNED BY:
[Signature]
RICHARD M. BASANAL
Professional Engineer

DRAFTED BY:
[Signature]
MARC L. PEREZ
AA II

PROJECT/TA No:
DATE SUBMITTED:
DRAWING STATUS:
DATE DESCRIPTION/REMARKS BY

PLAN CATEGORY	SHEET NUMBER	PAPER SIZE
AR-02	02/01	A4